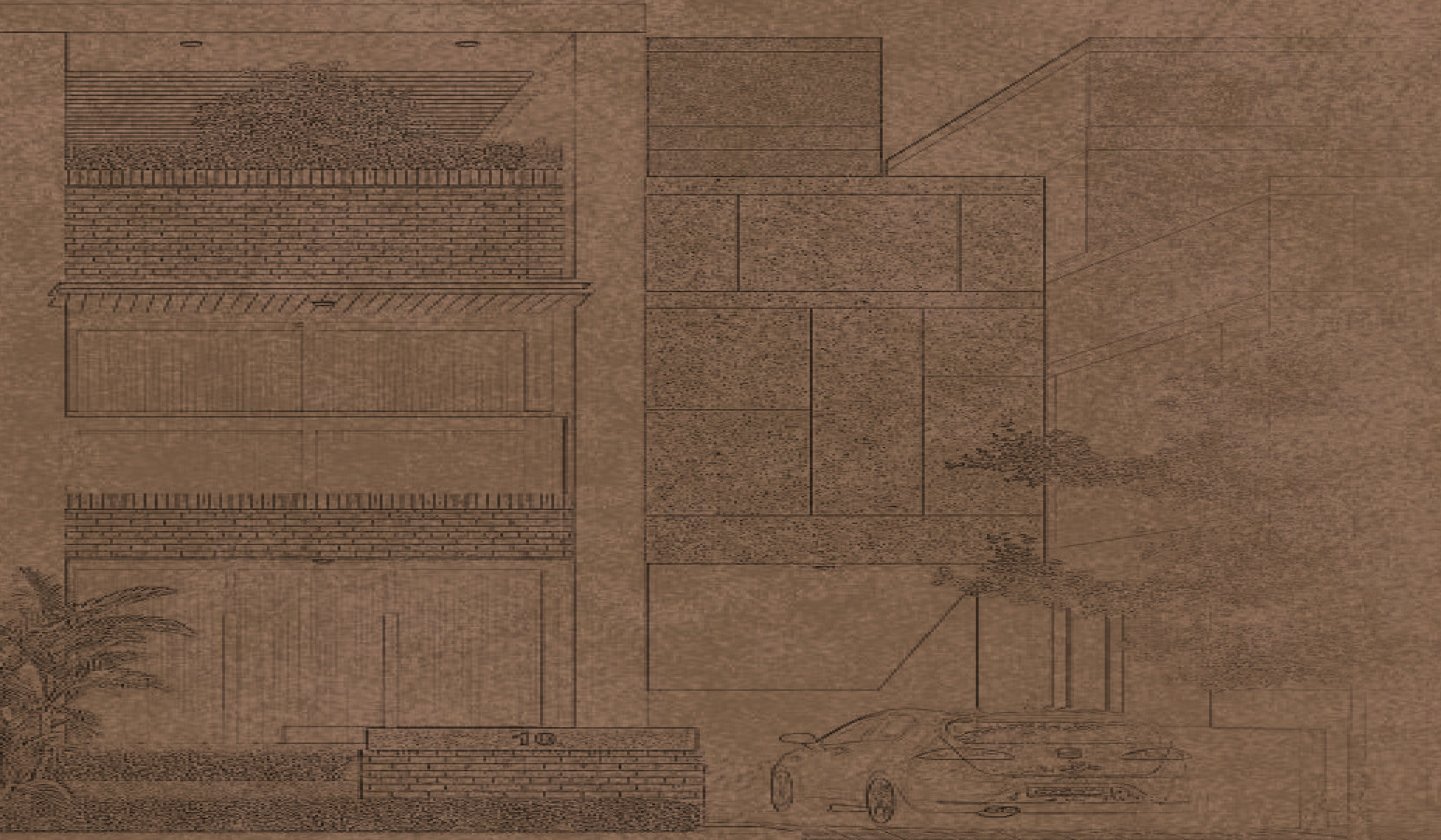


*A Lavish life one desires*



**KISHAN**  
*Sageewood*



4BHK LUXURIOUS BUNGALOWS



**KISHAN**  
*Sagewood*

Where Beauty and Serenity Converge -  
Welcome to

## Nature's Gateway!

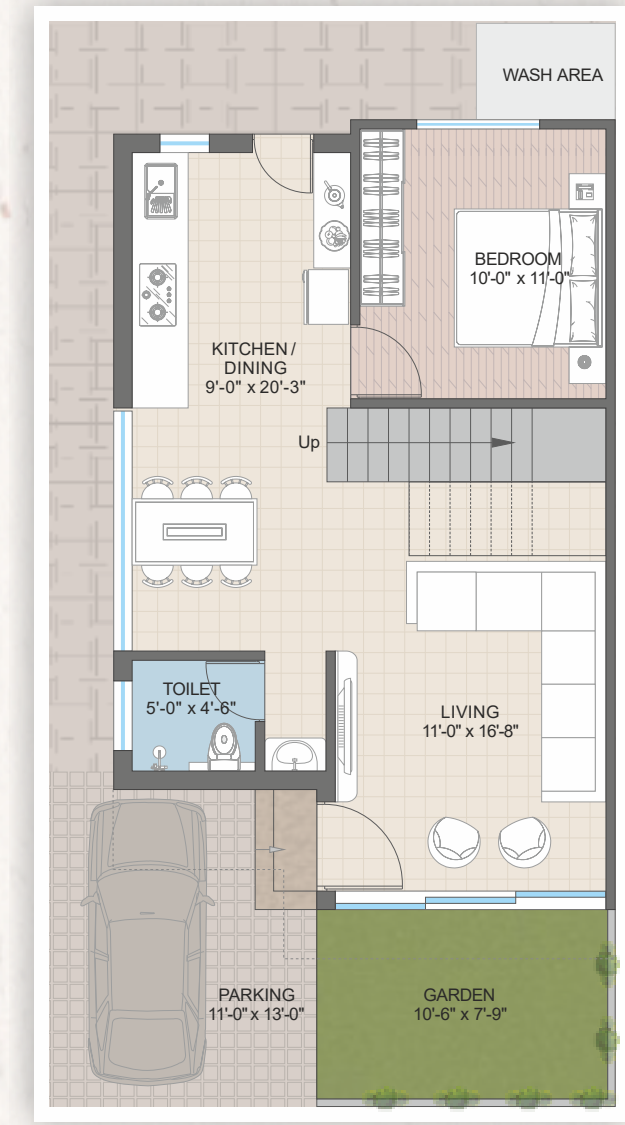
Here is one place that speaks your language. Thoughtfully conceived, Kishan Sagewood is Luxurious Bungalows that blends modern conveniences and amenities with an enriching lifestyle.



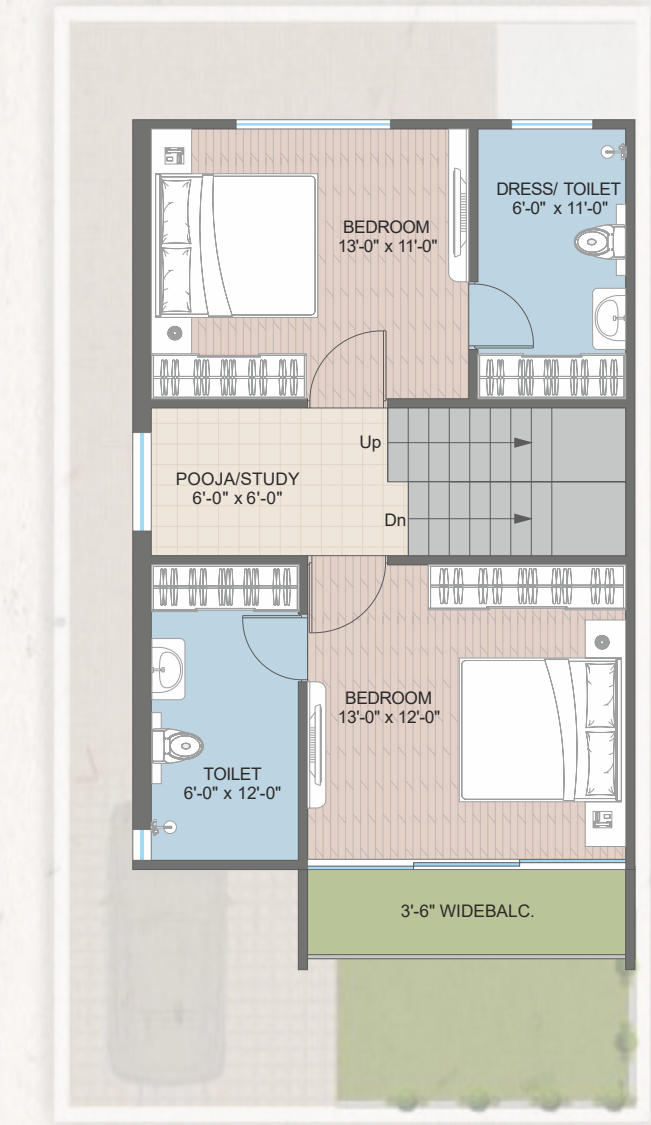


# 4 BH K Unit P lan

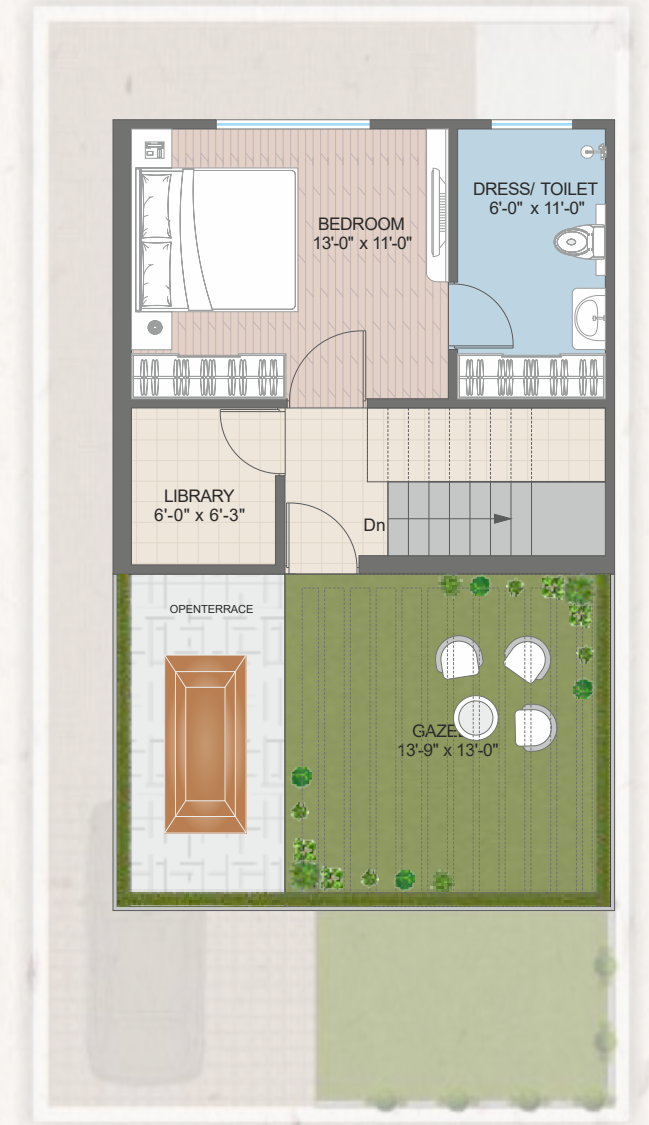
Unit No. 01 to 9 & 34 to 44



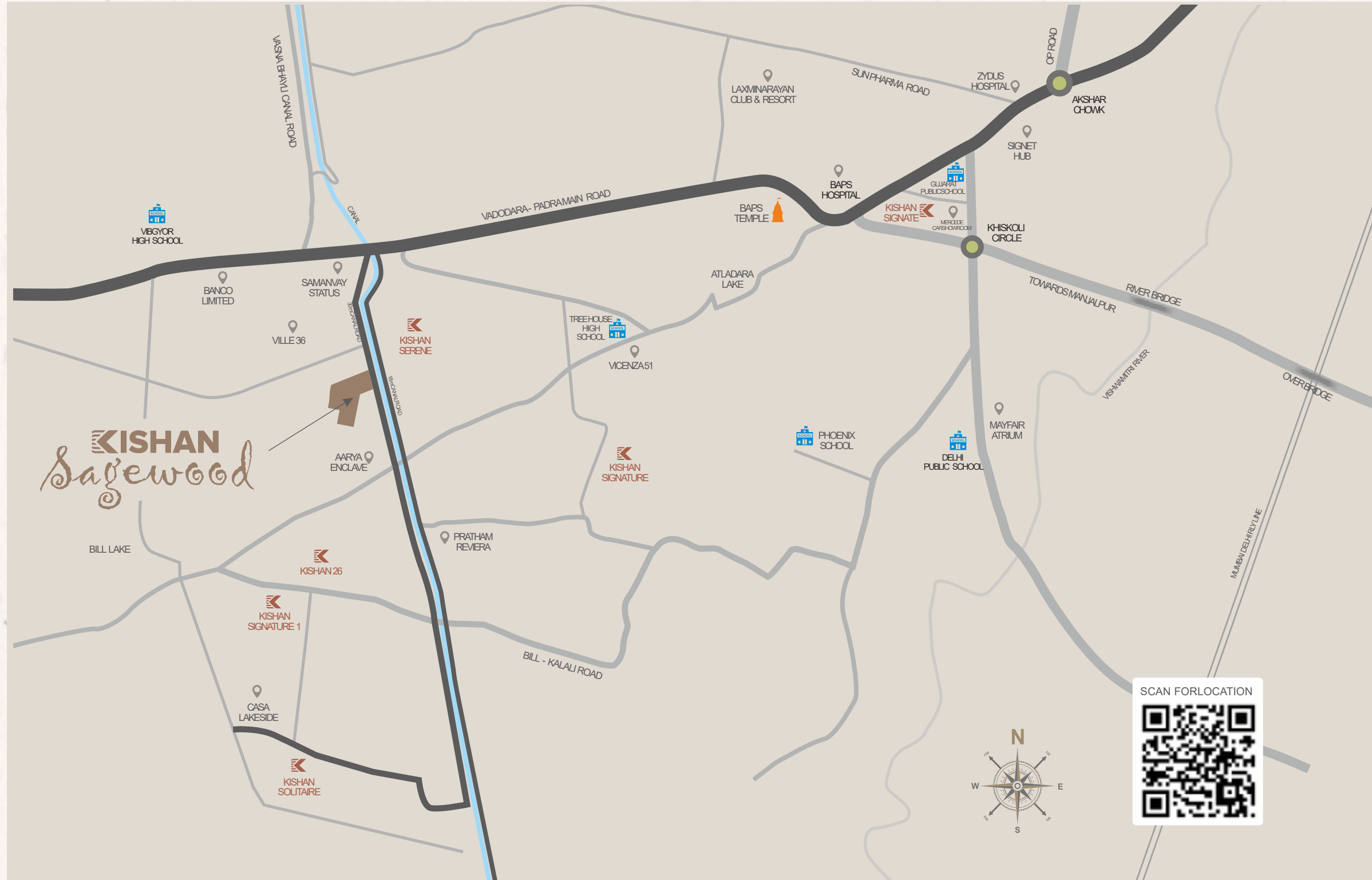
GROUND FLOOR PLAN



FIRST FLOOR PLAN



SECOND FLOOR PLAN



Developers :  
 KOHSA INFRAESTATE LLP

Site :  
 "Kishan Sagewood"  
 Behind Samanvay Status 1,30 Mtr Canal Road,  
 TP27ABill, Atladara-Padra Main Road, Vadodra - 391410.

Contact :  
 +9187340 67777 | 87340 87777

Website : [www.kishangroup.in](http://www.kishangroup.in)  
 Email : [hello@kishangroup.in](mailto:hello@kishangroup.in)

Architect : **SONI ASSOCIATES**  
 ARCHITECT & ENGINEER  
 DHIREN SONI

Structure :  
 Ashutosh  
 Desai



Scan for Rera

Above project is registered under Gujrera. Rera Reg. No. : PR/GJ/ VADODARA/ VADODARA/  
 Vadodra Municipal Corporation/RAA14874/250225/311229  
 For further details Visit : [www.gujrera.gujarat.gov.in](http://www.gujrera.gujarat.gov.in) under registered project.



Scan for Website